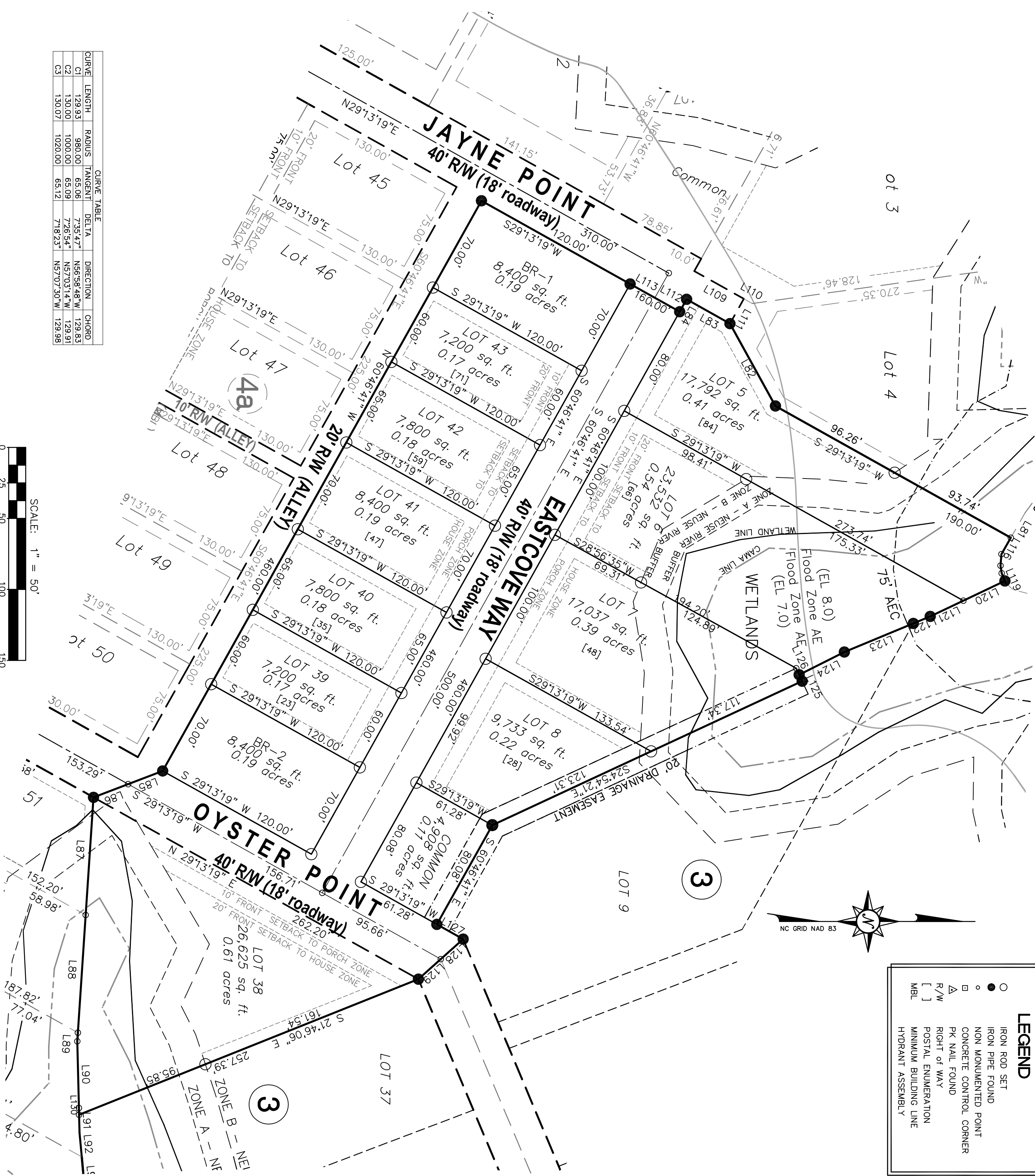


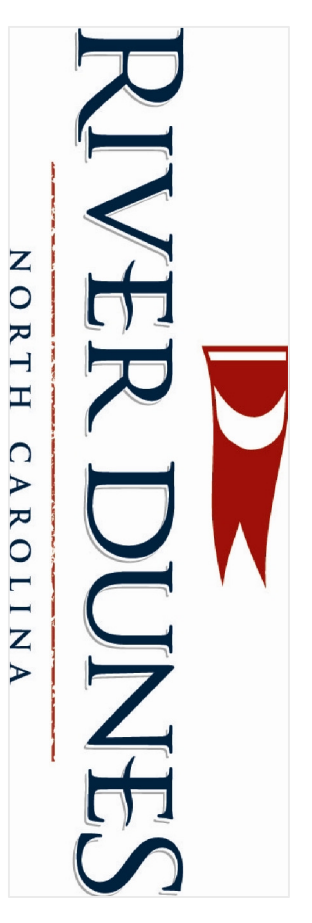
LINE	LENGTH	BEARING
L1	6.68	N14°50'20"E
L2	9.22	N24°43'44"E
L3	13.96	N55°01'00"E
L4	27.13	N35°00'01"E
L5	8.97	N08°40'15"E
L6	16.24	N06°18'25"W
L7	15.52	N16°04'47"W
L8	14.09	N09°51'27"E
L9	8.87	N26°44'28"E
L10	5.84	N35°26'02"E
L11	16.61	N14°37'49"E
L12	17.37	N14°37'49"E
L13	8.74	N36°17'44"E
L14	17.34	N69°54'18"E
L15	9.70	N50°39'54"E
L16	6.73	N33°18'10"E
L17	3.71	N16°49'08"E
L18	24.63	N01°09'40"E
L19	11.45	N08°29'43"W
L20	12.18	N16°20'04"W
L21	9.56	N05°39'35"W
L22	27.49	N03°17'49"E
L23	39.15	N22°31'29"E
L24	13.23	N02°40'44"W
L25	3.61	N10°25'57"W
L26	28.79	N03°58'34"E
L27	7.92	N44°19'30"E
L28	2.23	N55°55'18"E
L29	3.54	N55°55'18"E
L30	32.86	N30°38'43"E
L31	6.70	N44°46'13"E
L32	6.53	N75°45'49"E
L33	24.17	N82°37'08"E
L34	40.70	N31°15'58"E
L35	42.96	N27°48'55"E
L36	9.29	N19°00'51"E
L37	8.18	N03°58'52"W
L38	6.81	N13°25'56"E
L39	7.17	N55°05'33"E
L40	8.40	N75°23'24"E
L41	7.11	N83°21'29"E
L42	3.91	S80°05'14"E
L43	22.59	N80°54'09"E
L44	15.16	N59°58'29"E
L45	14.21	N74°50'55"E
L46	7.93	S83°11'55"E
L47	25.20	N89°39'03"E
L48	14.72	S53°05'48"E
L49	10.63	S62°30'58"E
L50	7.38	S46°00'08"E
L51	5.65	N84°54'17"E
L52	7.90	N53°01'22"E
L53	8.65	N64°17'59"E
L54	14.27	N85°02'07"E
L55	3.22	N61°54'56"E
L56	17.24	N70°32'36"E
L57	8.21	N70°32'36"E
L58	6.11	S80°42'48"E
L59	14.06	S38°40'23"E
L60	9.03	S58°01'10"E
L61	8.03	N83°48'09"E
L62	8.59	N76°40'48"E
L63	9.33	N86°43'33"E
L64	9.87	S69°30'50"E
L65	7.02	S59°28'57"E
L66	9.46	S78°19'29"E
L67	18.82	N59°15'43"E
L68	12.42	N54°24'04"E
L69	19.55	N70°22'10"E
L70	7.12	N84°49'07"E
L71	3.93	S87°41'24"E
L72	15.83	S42°45'56"E
L73	12.44	S34°24'10"E
L74	3.97	S04°35'57"E
L75	9.70	S41°52'56"W
L76	5.26	S58°29'20"W
L77	5.47	S25°12'38"W
L78	15.55	S06°44'41"E
L79	18.00	S28°19'13"E
L80	23.11	S53°45'07"E
L81	20.11	S60°11'18"E
L82	66.27	S61°06'05"W
L83	35.00	S29°13'19"W
L84	10.00	S60°46'41"E
L85	26.06	S20°53'54"E
L86	26.06	S20°53'54"E
L87	83.03	S66°10'59"E
L88	83.03	S66°10'59"E
L89	6.09	S86°10'59"E
L90	46.99	N88°36'14"E
L91	17.58	N88°36'14"E
L92	16.91	N84°39'44"E
L93	27.05	N84°39'44"E
L94	66.00	N82°14'28"E
L95	83.88	N82°14'28"E
L96	32.20	S23°46'04"W
L97	12.73	S17°08'28"W
L98	7.23	S01°56'55"E
L99	3.58	S06°23'21"W

L100	28.01	S68°23'21"W
L101	22.40	N37°29'24"E
L102	1.03	S01°43'10"E
L103	31.34	S01°43'10"E
L104	27.00	S06°37'26"E
L105	77.82	S12°04'20"E
L106	83.82	S19°40'07"E
L107	29.25	N04°26'21"W
L108	14.51	N27°21'24"E
L109	40.00	N29°13'19"E
L110	6.82	N29°13'19"E
L111	20.00	S60°46'41"E
L112	20.00	S29°13'19"W
L113	20.00	S29°13'19"W
L114	20.16	S62°27'45"W
L115	20.16	S62°27'45"W
L116	13.30	N85°19'48"W
L117	8.13	N85°19'48"W
L118	5.45	N81°16'26"E
L119	5.87	S67°05'11"W
L120	25.86	N52°23'33"W
L121	12.87	N22°31'18"W
L122	12.87	N22°31'18"W
L123	52.60	N22°31'18"W
L124	36.63	N26°40'41"W
L125	5.00	N65°05'59"E
L126	5.00	N65°05'59"E
L127	21.25	S29°13'19"W
L128	21.15	S41°48'03"E
L129	4.72	S88°36'14"W



CURVE	LENGTH	RADIUS	TANGENT	DELTA	DIRECTION	CHORD
C1	129.93	980.00	65.06	7°55'47"	N56°58'48"W	129.83
C2	130.00	1000.00	65.09	7°26'54"	N57°03'14"W	129.91
C3	130.07	1020.00	65.12	7°18'23"	N57°07'30"W	129.98

LEGEND	
○	IRON ROD SET
●	IRON PIPE FOUND
○	NON MONUMENTED POINT
□	CONCRETE CONTROL CORNER
△	PK NAIL FOUND
[ ]	RIGHT OF WAY
[ ]	POSTAL ENUMERATION
[ ]	MINIMUM BUILDING LINE
[ ]	HYDRANT ASSEMBLY



DATE: \_\_\_\_\_

FINAL PLAT  
of  
RIVER DUNES SUBDIVISION  
MARINA VILLAGE - SECTION 4B  
PUD DEVELOPMENT  
AUGUST 30, 2007  
NO. 2 TOWNSHIP  
PAMLICO COUNTY  
NORTH CAROLINA

JOB NUMBER	04135
DWG NUMBER	0006
SHEET NUMBER	2 of 2
PROJECT SURVEYOR	JTC
SURVEYED BY	
DRAWN BY	GT
FIELD BOOK	NB
COMPUTER FILE	41350016.pac4b.dwg