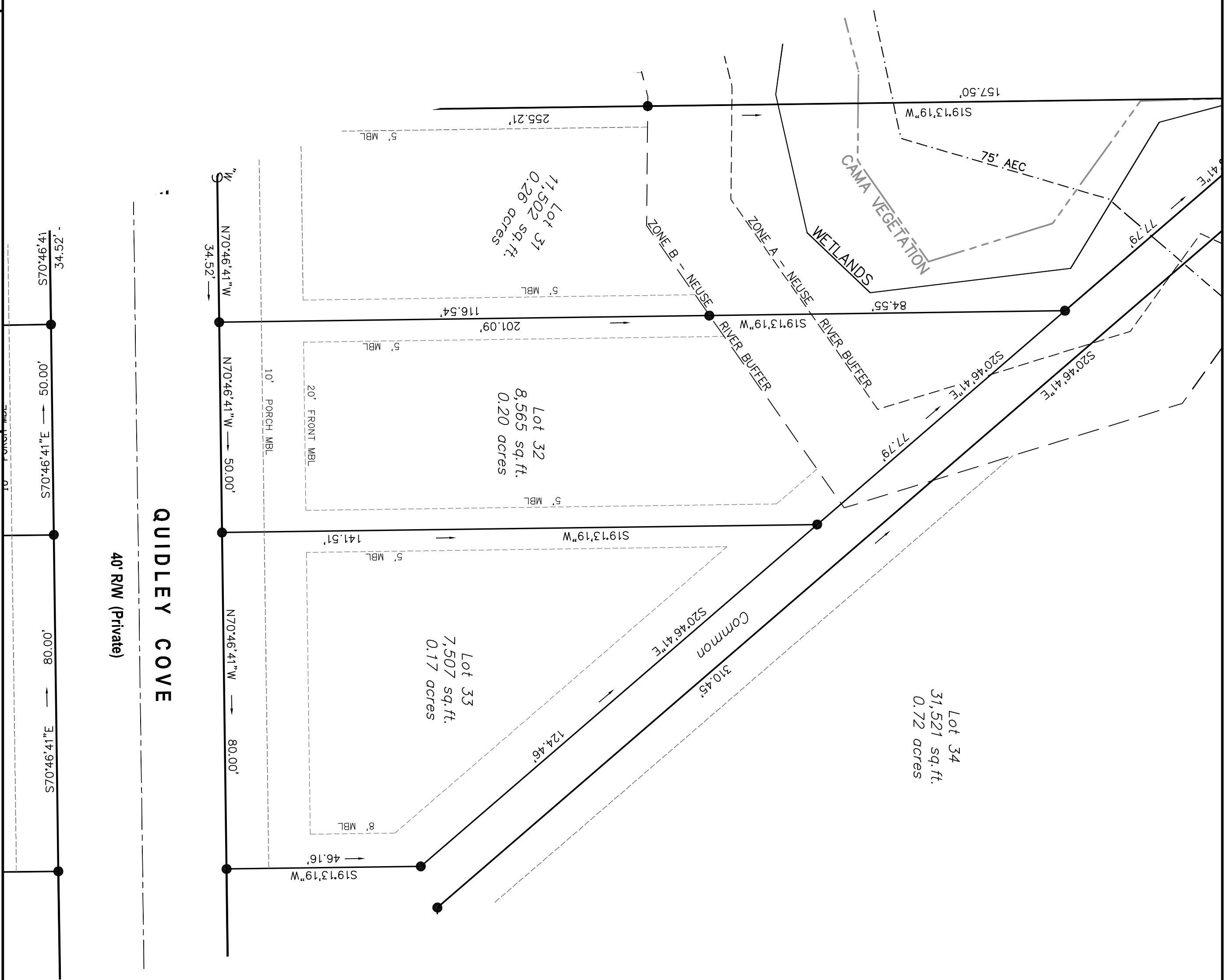
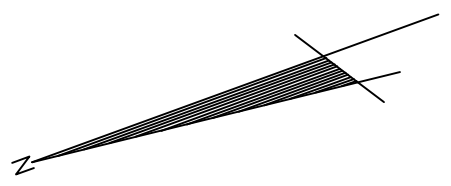
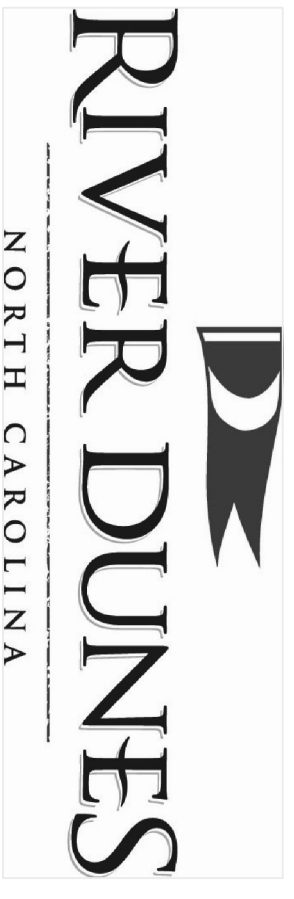
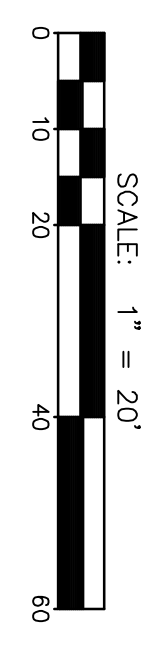
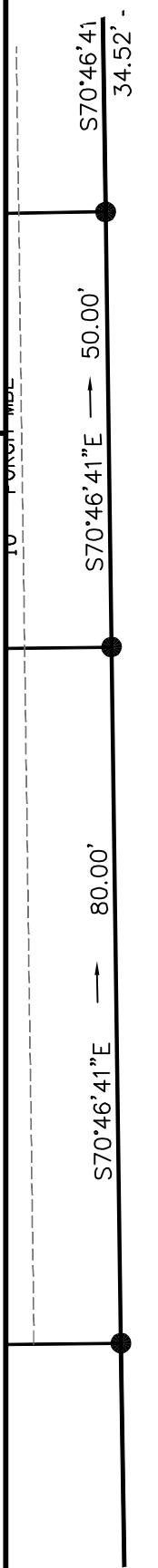


316



QUIDLEY COVE
40' RW (Private)



2807 NEUSE BLVD. BLDG. 5
NEW BERN, NORTH CAROLINA 28562
TELE: (252) 633-5899
FAX: (252) 633-6551

LOT NUMBER 32
RIVER DUNES SUBDIVISION
MARINA VILLAGE - SECTION 3
PUD DEVELOPMENT
RAY and DONNA HEAP
32 QUIDLEY COVE
MARCH 19, 2006
NO. 2 TOWNSHIP
PAMLICO COUNTY
SCALE: 1" = 20'

**FOR INFORMATION
PURPOSES ONLY
NOT FOR SALES,
RECORDATION
OR CONVEYANCES**