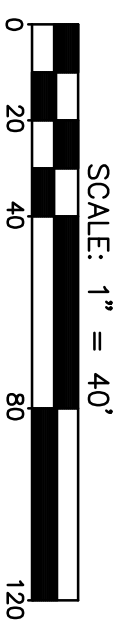
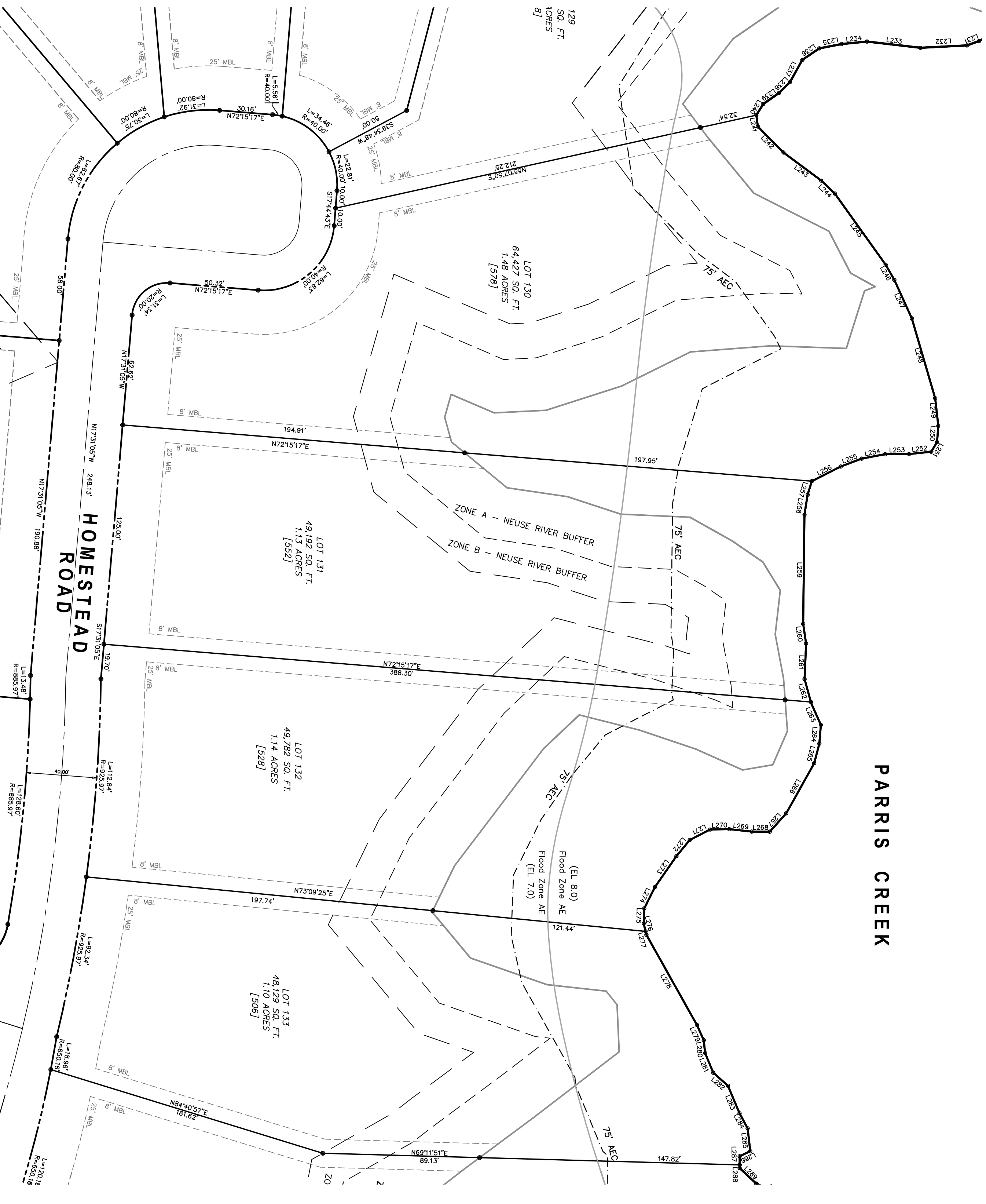


LEGEND	
●	IRON ROD SET
○	IRON PIPE FOUND
○	NON MONUMENTED POINT
□	CONCRETE CONTROL CORNER
△	PK NAIL FOUND
[]	RIGHT of WAY
[]	POSTAL ENUMERATION
—	MINIMUM BUILDING LINE
- - -	EASEMENT

LINE	LENGTH	BEARING
L257	8.05	S05°09'50"E
L258	11.53	S13°26'02"E
L259	61.95	S21°41'14"E
L260	11.29	S31°02'17"E
L261	20.22	S19°52'11"E
L262	14.49	S37°58'00"E



MCKIM & CREED
 2807 NEUSE BLVD. BLDG. 5
 NEW BERN, NORTH CAROLINA 28562
 TELE: (252) 633-5899
 FAX: (252) 633-6551

LOT NUMBER 131
 RIVER DUNES SUBDIVISION
 SECTION 11
 PUD DEVELOPMENT

MAY 2, 2007
 NO. 2 TOWNSHIP
 PAMLICO COUNTY
 NORTH CAROLINA

FOR INFORMATION
 PURPOSES ONLY
 NOT FOR SALES,
 RECORDATION
 OR CONVEYANCES

RIVER DUNES
 NORTH CAROLINA