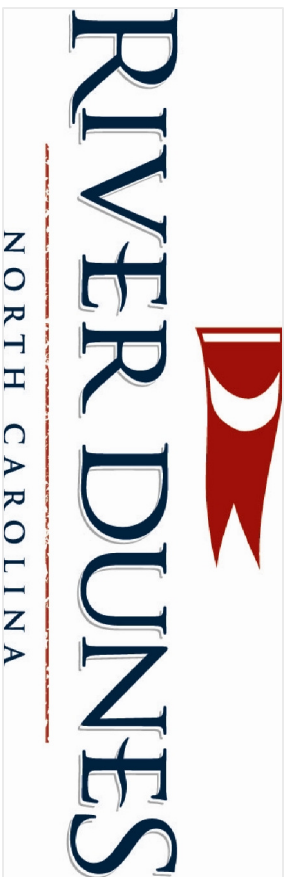
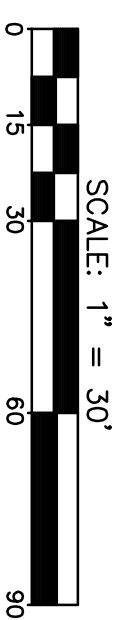
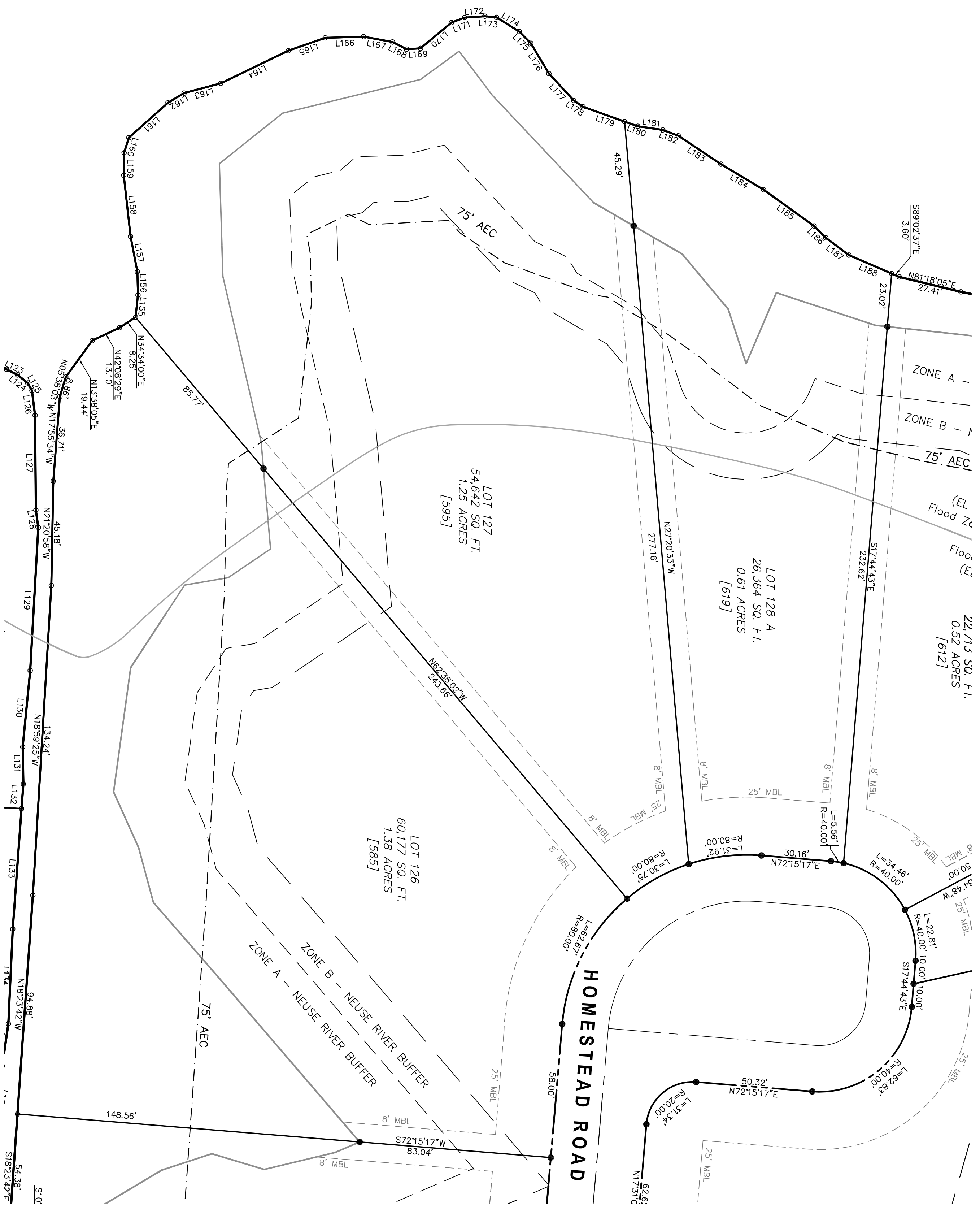


LEGEND	
●	IRON ROD SET
○	IRON PIPE FOUND
○	NON MONUMENTED POINT
□	CONCRETE CONTROL CORNER
△	PK NAIL FOUND
R/W	RIGHT of WAY
[]	POSTAL ENUMERATION
MBL	MINIMUM BUILDING LINE
EASE	EASEMENT

LINE TABLE		
LINE	LENGTH	BEARING
L155	9.62	N16°02'00"W
L156	10.08	N23°55'52"W
L157	15.61	N33°14'42"W
L158	26.62	N28°46'50"W
L159	9.68	N21°33'33"W
L160	6.90	N04°57'11"W
L161	22.67	N25°53'52"E
L162	8.12	N56°35'44"E
L163	16.45	N52°46'34"E
L164	32.48	N41°45'17"E
L165	16.87	N48°18'31"E
L166	16.68	N65°53'30"E
L167	12.68	N78°01'53"E
L168	6.83	S85°26'59"E
L169	6.05	N64°32'23"E
L170	17.46	N27°44'15"E
L171	6.05	N46°48'37"E
L172	8.81	N63°44'07"E
L173	5.09	N73°05'59"E
L174	11.60	S80°13'52"E
L175	7.07	S67°11'28"E
L176	15.31	S53°15'36"E
L177	15.83	S78°30'50"E
L178	4.89	S78°30'50"E
L179	19.08	N87°12'24"E



LOT NUMBER 127
RIVER DUNES SUBDIVISION
SECTION 11
PUD DEVELOPMENT

MAY 2, 2007
 NO. 2 TOWNSHIP
 PAMLICO COUNTY
 NORTH CAROLINA

SCALE: 1" = 30'
FOR INFORMATION PURPOSES ONLY NOT FOR SALES, RECORDATION OR CONVEYANCES