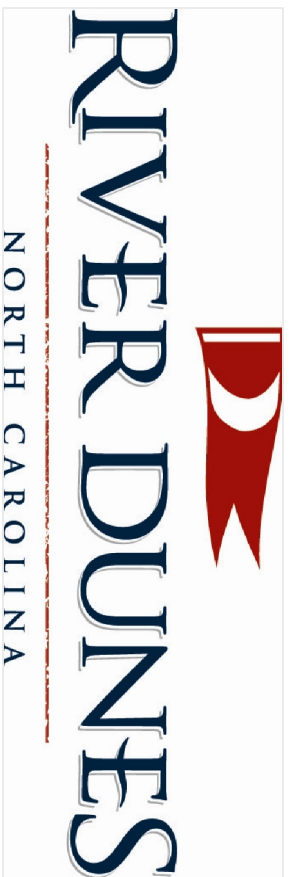
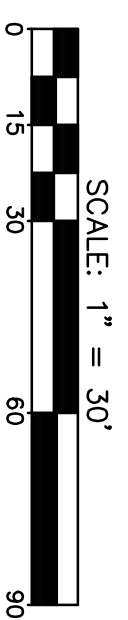
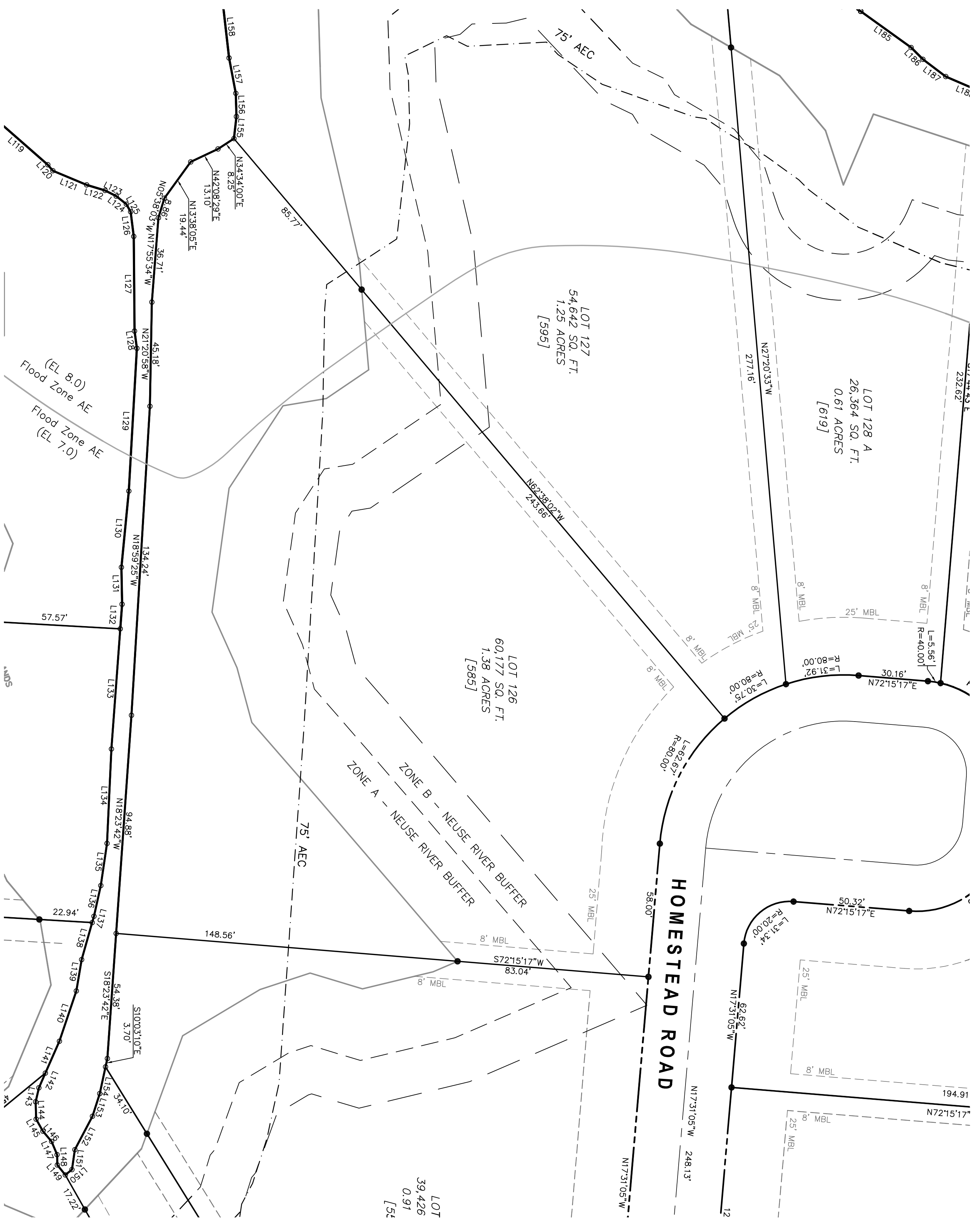


LEGEND	
●	IRON ROD SET
○	IRON PIPE FOUND
○	NON MONUMENTED POINT
□	CONCRETE CONTROL CORNER
△	PK NAIL FOUND
[]	RIGHT OF WAY
[]	POSTAL ENUMERATION
[]	MINIMUM BUILDING LINE
[]	EASEMENT



MCKIM & CREED
2807 NEUSE BLVD. BLDG. 5
NEW BERN, NORTH CAROLINA 28562
TELE: (252) 633-5899
FAX: (252) 633-6551

LOT NUMBER 126
RIVER DUNES SUBDIVISION
SECTION 11
PUD DEVELOPMENT
MAY 2, 2007
NO. 2 TOWNSHIP
PAMLICO COUNTY
NORTH CAROLINA

FOR INFORMATION
PURPOSES ONLY
NOT FOR SALES,
RECORDATION
OR CONVEYANCES