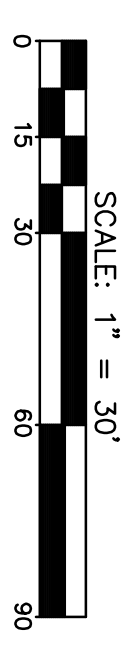
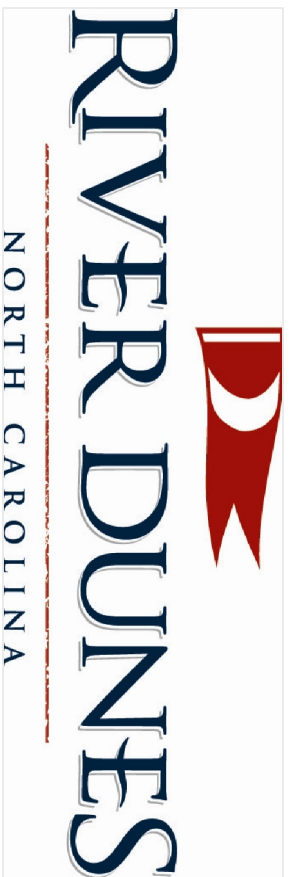
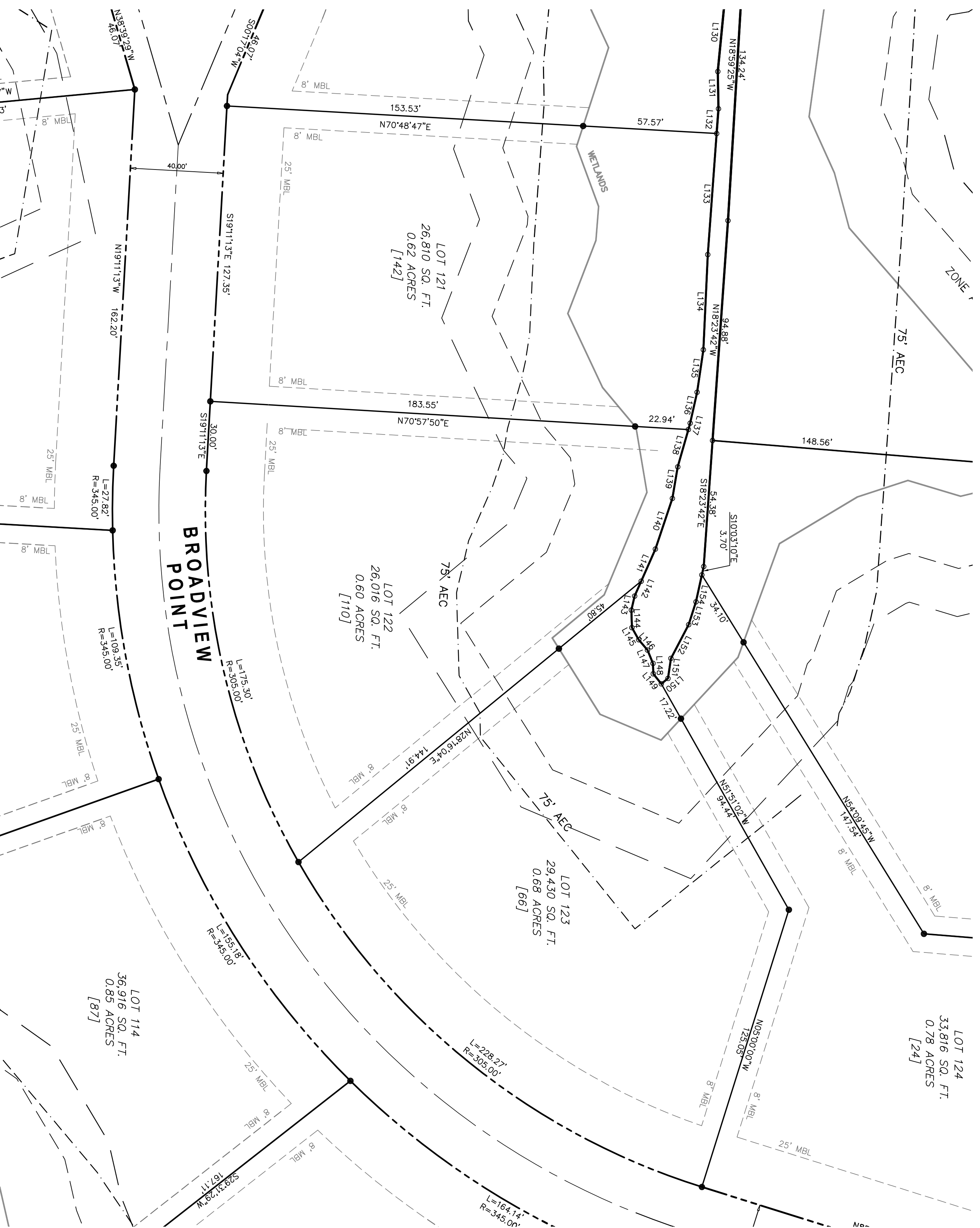


LEGEND	
●	IRON ROD SET
○	IRON PIPE FOUND
○	NON MONUMENTED POINT
□	CONCRETE CONTROL CORNER
△	PK NAIL FOUND
R/W	RIGHT OF WAY
[]	POSTAL ENUMERATION
MBL	MINIMUM BUILDING LINE
EASE	EASEMENT

LINE	LENGTH	BEARING
L138	16.69	S06°32'29"E
L139	13.78	S12°42'30"E
L140	23.00	S03°49'47"E
L141	15.11	S01°22'38"W



McKIM & CREED
 2807 NEUSE BLVD. BLDG. 5
 NEW BERN, NORTH CAROLINA 28562
 TELE: (252) 633-5899
 FAX: (252) 633-6551

LOT NUMBER 122
 RIVER DUNES SUBDIVISION
 SECTION 11
 PUD DEVELOPMENT
 MAY 2, 2007
 NO. 2 TOWNSHIP
 PAMLICO COUNTY
 NORTH CAROLINA

FOR INFORMATION PURPOSES ONLY NOT FOR SALES, RECORDATION or CONVEYANCES