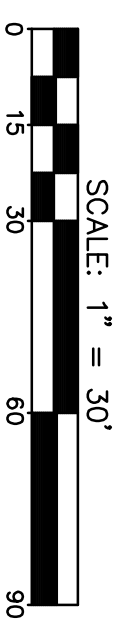
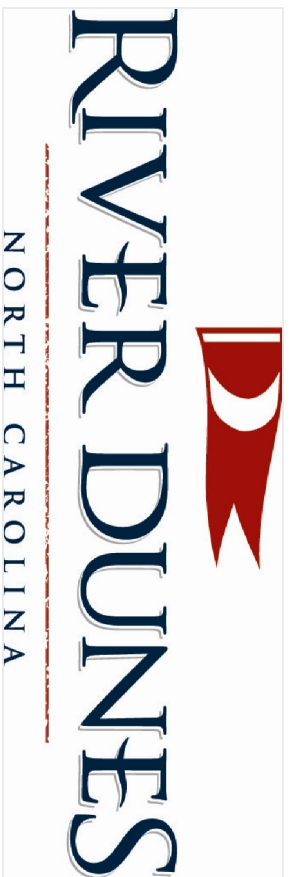
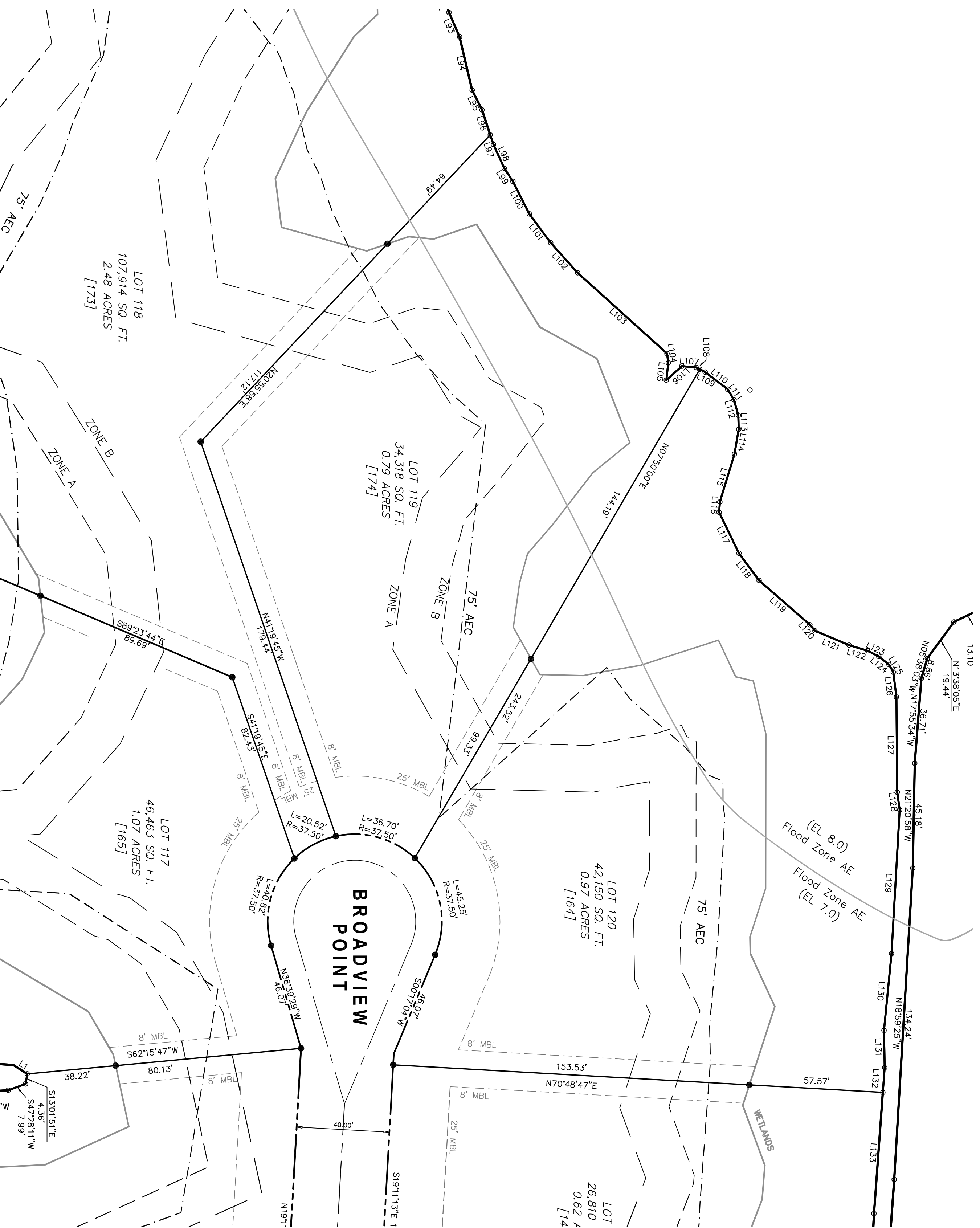


LEGEND	
●	IRON ROD SET
○	IRON PIPE FOUND
○	NON MONUMENTED POINT
□	CONCRETE CONTROL CORNER
△	PK NAIL FOUND
R/W	RIGHT OF WAY
[ ]	POSTAL ENUMERATION
MBL	MINIMUM BUILDING LINE
EASE	EASEMENT

LINE	LENGTH	BEARING
L97	4.38	S40°42'22"E
L98	11.15	S46°50'22"E
L99	6.82	S55°51'34"E
L100	15.64	S49°12'53"E
L101	15.50	S58°47'44"E
L102	17.32	S64°25'29"E
L103	51.88	S70°17'55"E
L104	4.05	S30°28'45"E
L105	7.45	S15°38'58"E
L106	8.99	N25°43'38"E
L107	6.14	N72°45'10"E
L108	1.78	S84°57'36"E



**McKIM & CREED**  
 2807 NEUSE BLVD. BLDG. 5  
 NEW BERN, NORTH CAROLINA 28562  
 TELE: (252) 633-5899  
 FAX: (252) 633-6551

**LOT NUMBER 119**  
 RIVER DUNES SUBDIVISION  
 SECTION 11  
 PUD DEVELOPMENT

MAY 2, 2007  
 NO. 2 TOWNSHIP  
 PAMLICO COUNTY  
 NORTH CAROLINA

SCALE: 1" = 30'

**FOR INFORMATION PURPOSES ONLY NOT FOR SALES, RECORDATION OR CONVEYANCES**