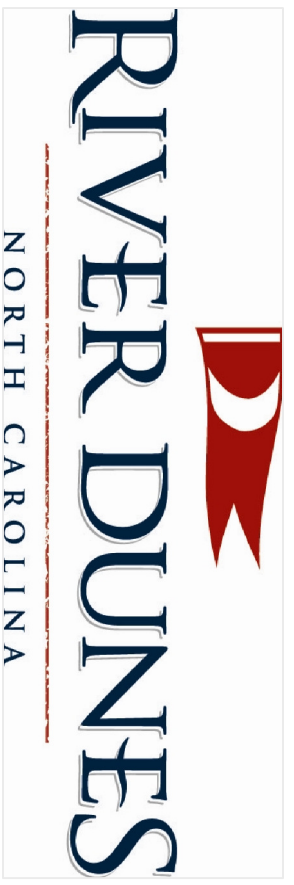
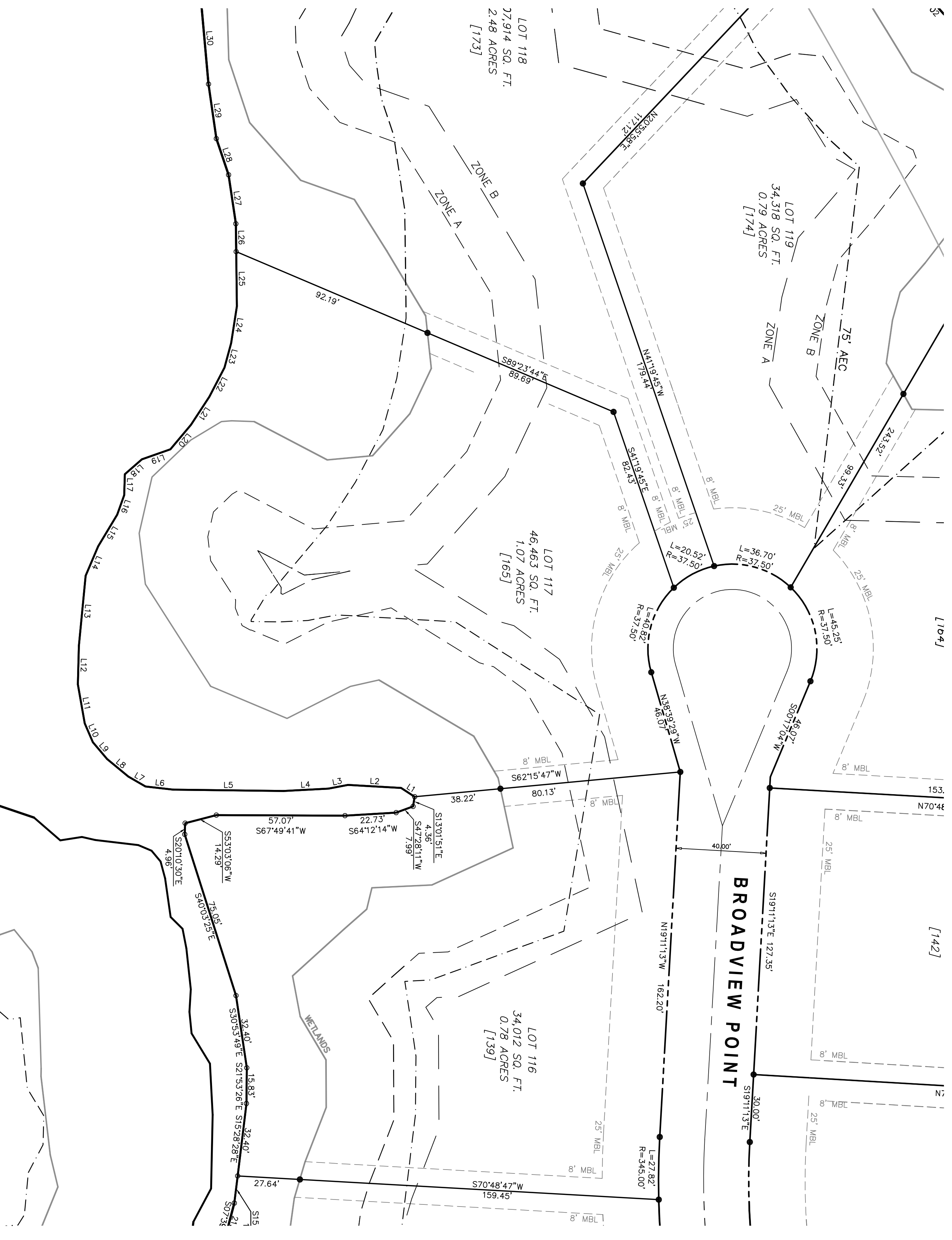


LEGEND

- IRON ROD SET
- IRON PIPE FOUND
- NON MONUMENTED POINT
- CONCRETE CONTROL CORNER
- △ PK NAIL FOUND
- R/W RIGHT of WAY
- [] POSTAL ENUMERATION
- MBL MINIMUM BUILDING LINE
- EASE EASEMENT

LINE TABLE

LINE	LENGTH	BEARING
L1	7.16	N79°44'12"W
L2	23.56	S70°56'59"W
L3	8.90	S56°43'55"W
L4	19.91	S64°38'11"W
L5	48.91	S68°16'25"W
L6	12.41	S74°07'03"W
L7	12.25	N82°22'04"W
L8	9.73	N72°48'28"W
L9	9.12	N62°42'42"W
L10	17.54	N52°26'22"W
L11	17.12	N20°49'18"W
L12	31.26	N16°55'48"W
L13	14.19	N00°38'16"E
L14	16.41	N08°41'15"E
L15	9.16	N02°38'27"W
L16	10.04	N26°30'05"E
L17	13.41	N48°07'29"E
L18	14.23	N17°34'22"E
L19	14.88	N10°42'01"E
L20	11.26	N05°11'26"E
L21	16.55	N13°53'37"W
L22	24.23	N23°06'58"W



2807 NEUSE BLVD. BLDG. 5
 NEW BERN, NORTH CAROLINA 28562
 TELE: (252) 633-5899
 FAX: (252) 633-6551

LOT NUMBER 117
 RIVER DUNES SUBDIVISION
 SECTION 11
 PUD DEVELOPMENT

MAY 2, 2007
 NO. 2 TOWNSHIP

PAMLICO COUNTY

SCALE: 1" = 30'
 NORTH CAROLINA

**FOR INFORMATION
 PURPOSES ONLY
 NOT FOR SALES,
 RECORDATION
 OR CONVEYANCES**