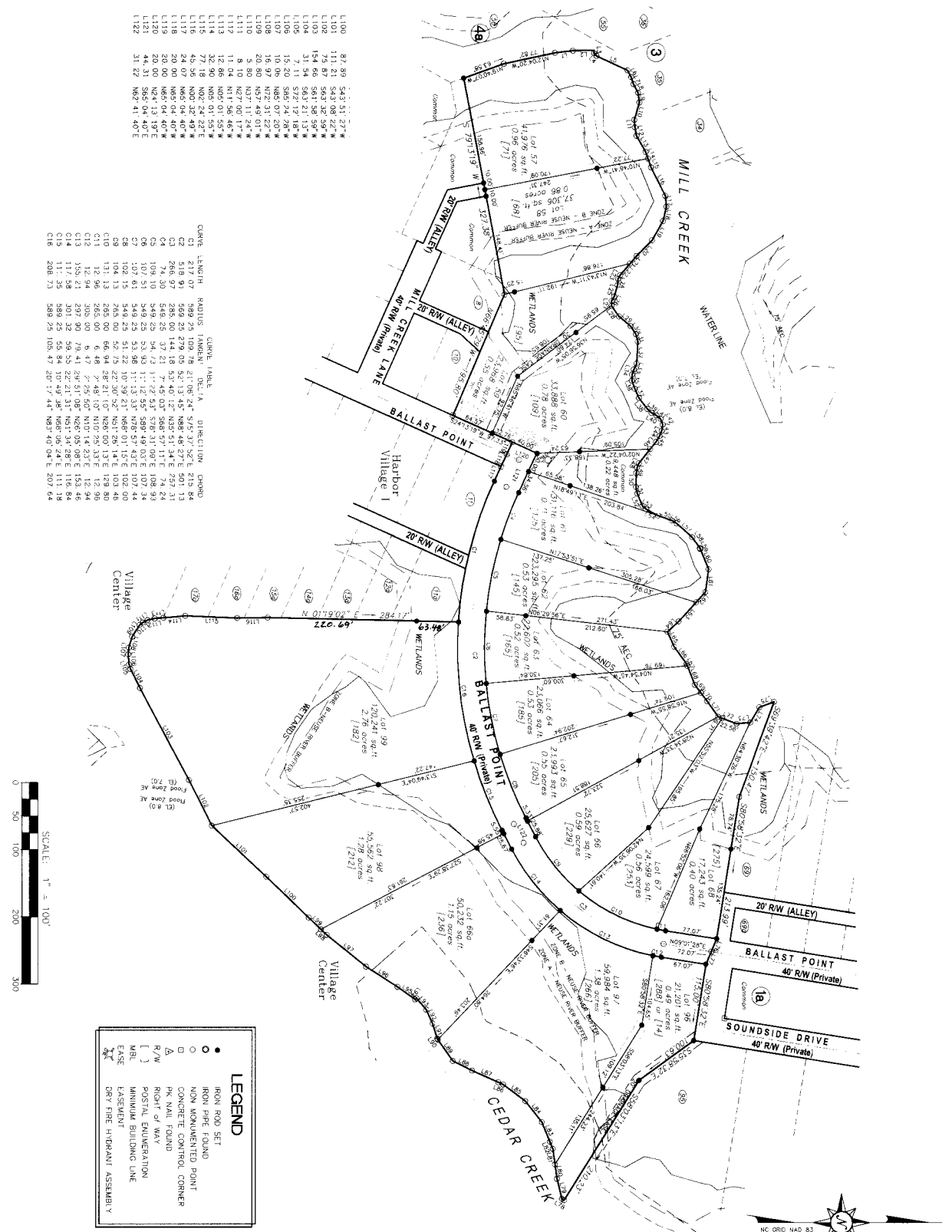


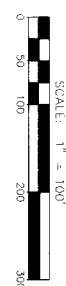
LINE TABLE

LINE	LENGTH	BEARING
L1	27.00	N66.37.36"W
L2	31.34	N01.43.10"W
L3	4.67	N67.04.26"E
L4	50.98	N45.06.52"E
L5	11.21	N61.56.47"E
L6	11.22	N70.00.01"E
L7	14.24	N63.01.45"E
L8	14.24	N63.01.45"E
L9	26.94	S73.57.17"E
L10	26.94	S73.57.17"E
L11	11.13	N65.42.52"E
L12	8.89	N79.26.32"E
L13	12.89	N79.26.32"E
L14	10.49	N70.56.00"E
L15	13.86	N70.56.00"E
L16	49.33	N63.34.21"E
L17	49.33	N63.34.21"E
L18	22.10	S76.44.02"E
L19	32.81	S60.00.56"E
L20	32.81	S60.00.56"E
L21	22.54	S49.30.15"E
L22	22.54	S49.30.15"E
L23	6.36	S60.02.18"E
L24	9.23	S85.54.37"E
L25	16.03	S73.28.14"E
L26	16.03	S73.28.14"E
L27	7.11	S67.56.54"E
L28	19.25	N85.14.27"E
L29	22.48	N39.38.54"E
L30	22.48	N39.38.54"E
L31	11.49	N76.07.11"E
L32	32.57	S86.32.54"E
L33	9.53	S85.19.23"E
L34	9.53	S85.19.23"E
L35	8.80	S88.12.05"E
L36	12.83	N70.41.21"E
L37	14.93	N65.40.28"E
L38	28.43	N52.28.05"E
L39	28.43	N52.28.05"E
L40	8.39	N28.05.33"E
L41	8.06	N41.02.49"E
L42	9.09	N68.98.03"E
L43	8.39	S66.46.25"E
L44	8.39	S66.46.25"E
L45	10.30	S59.20.15"E
L46	13.73	S51.19.12"E
L47	6.87	S66.52.29"E
L48	8.21	S88.40.22"E
L49	20.89	S88.34.16"E
L50	20.89	S88.34.16"E
L51	20.06	N19.53.05"E
L52	20.06	N19.53.05"E
L53	7.38	N43.17.59"E
L54	19.98	N28.23.58"E
L55	24.55	N19.55.51"E
L56	24.55	N19.55.51"E
L57	31.09	N41.23.03"E
L58	19.83	N54.45.42"E
L59	31.01	N67.24.09"E
L60	31.01	N67.24.09"E
L61	34.34	S87.08.17"E
L62	20.91	S47.33.25"E
L63	38.36	S47.33.25"E
L64	24.04	S86.05.25"E
L65	31.88	N54.28.22"E
L66	3.18	N68.16.12"E
L67	3.18	N68.16.12"E
L68	14.87	N65.16.32"E
L69	14.87	N65.16.32"E
L70	15.66	N62.98.44"E
L71	28.53	N54.48.08"E
L72	28.53	N54.48.08"E
L73	23.44	N20.21.01"W
L74	26.39	N65.93.08"W
L75	23.44	N20.21.01"W
L76	20.82	S69.56.21"E
L77	4.01	S32.96.19"W
L78	30.72	S75.47.23"W
L79	21.58	S82.03.44"W
L80	21.58	S82.03.44"W
L81	11.45	S67.57.28"W
L82	11.45	S67.57.28"W
L83	31.58	S67.57.28"W
L84	39.73	S52.00.29"W
L85	4.19	S36.52.51"W
L86	4.19	S36.52.51"W
L87	42.81	S54.18.24"W
L88	31.96	S56.08.33"W
L89	38.58	S55.11.07"W
L90	38.58	S55.11.07"W
L91	23.46	S77.48.38"W
L92	22.92	S65.04.30"W
L93	22.13	S49.11.13"W
L94	32.10	S33.95.02"W
L95	55.77	S32.49.11"W
L96	75.37	S38.49.45"W
L97	26.31	S43.51.27"W
L98	26.31	S43.51.27"W



LEGEND

- IRON ROD SET
- NON DOCUMENTED POINT
- CONCRETE CONTROL CORNER
- △ RIGHT OF WAY
- [] POSTAL ENUMERATION
- MRL MINIMAL BUILDING LINE
- EASEMENT
- DRY FIRE HYDRANT ASSEMBLY

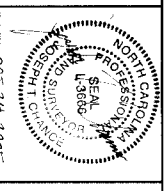


CURVE LENGTH, RADIIUS, TANGENT, DELTA, DIRECTION, CHORD

CI	217.07	889.25	109.78	21.06°24'	S45.37°32'E	815.84
C2	518.97	568.25	579.05	52.13°45'	N88.48°27'E	501.13
C3	266.97	268.00	444.18	53.40°12'	N33.51°34'E	751.31
C4	266.97	268.00	444.18	53.40°12'	N33.51°34'E	751.31
C5	109.10	548.23	54.72	11.22°37'	S38.31°08'E	108.93
C6	107.51	548.23	53.92	11.22°35'	S38.49°03'E	107.34
C7	107.61	548.23	53.92	11.33°33'	N28.57°43'E	107.44
C8	104.13	268.00	52.75	22.37°52'	N65.28°14'E	103.48
C9	104.13	268.00	52.75	22.37°52'	N65.28°14'E	103.48
C10	131.13	268.00	66.94	28.21°10'	N26.60°13'E	123.88
C11	12.96	268.00	6.48	2.48°10'	N10.25°33'E	12.96
C12	12.96	268.00	6.48	2.48°10'	N10.25°33'E	12.96
C13	12.96	268.00	6.48	2.48°10'	N10.25°33'E	12.96
C14	117.58	268.00	55.94	22.51°31'	N61.34°28'E	118.84
C15	117.58	268.00	55.94	22.51°31'	N61.34°28'E	118.84
C16	208.73	588.25	105.47	20.17°44'	N83.40°04'E	207.64

RIVER DUNES
NORTH CAROLINA

McKIM & CREED
2807 NEUSE BLVD. SUITE 5
N.W. HERR, NORTH CAROLINA 28562
TEL: (252) 553-5899
FAX: (252) 553-6531



FINAL PLAT
RIVER DUNES SUBDIVISION
MARINA VILLAGE SECTION 2
PUD DEVELOPMENT
OCTOBER 24, 2005
NO. 2 TOWNSHIP PAMLIKO COUNTY NORTH CAROLINA

JOB NUMBER: 0315
DWG NUMBER: 000
SHEET NUMBER: 2 of 2
PROJECT SUPERVISOR: JTC
DESIGNED BY: JTC
DRAWN BY: JTC
FIELD BOOK: 415
COMPUTER FILE: 415